

> SUBLIFT

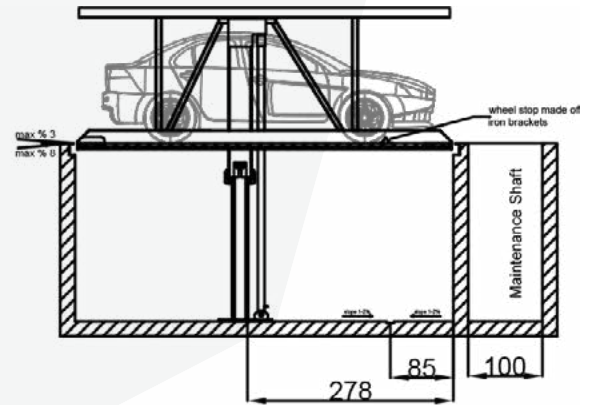
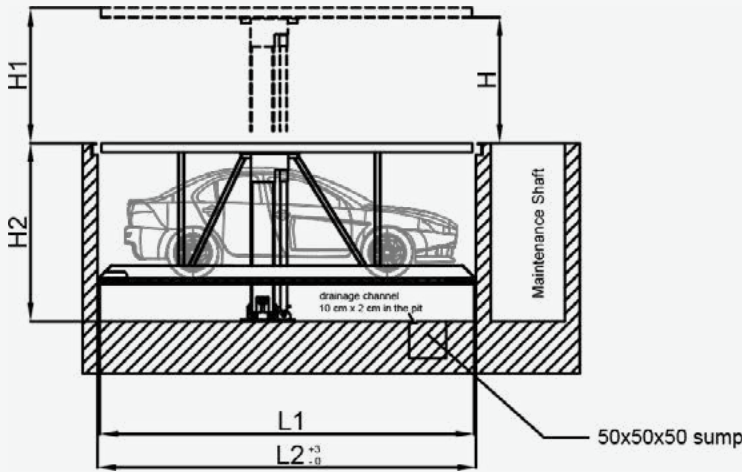


WE EXPAND
YOUR PARKING
CAPACITY



San  Park

DATASHEET



» SINGLE PLATFORM

Sublift H1W1
1 car

Sublift H2W1
2 cars

Sublift H3W1
3 cars

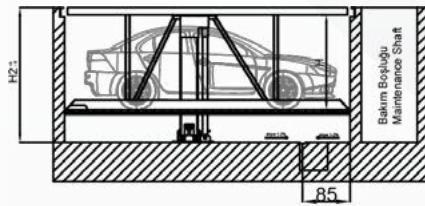
» DOUBLE PLATFORM

Sublift H1W2
1 car

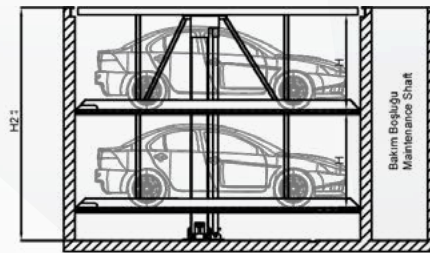
Sublift H2W2
2 cars

Sublift H3W2
3 cars

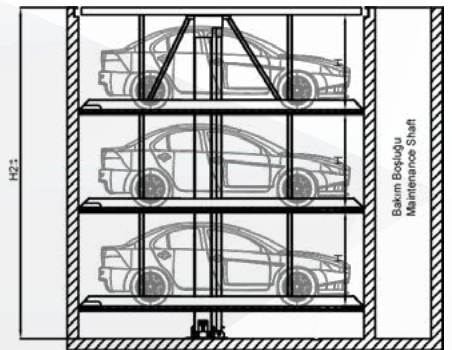
SUBLIFT H1W1-2



SUBLIFT H2W1-2



SUBLIFT H3W1-2



Type	Pit Depth (H2)	Car Height	Platform Entry Distance (H)	Upper Limit Height (H1)
Sublift H1W1	250 cm	165 cm	170 cm	200 cm
Sublift H1W1	285 cm	200 cm	205 cm	235 cm
Sublift H1W1	450 cm	165 cm	170 cm	380 cm
Sublift H2W1	520 cm	200 cm	205 cm	450 cm
Sublift H3W1	620 cm	165 cm	170 cm	550 cm

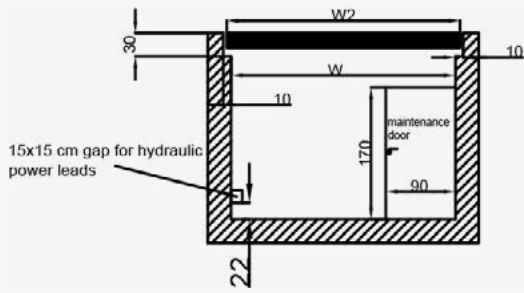
» CUSTOMER RESPONSIBILITY

- › The pit where the system is to be installed should be such that the maintenance shaft ladder and the pit are easily accessible.
- › The water collection well in the pit will be made and the good pump will be supplied by the customer. All drainage operations will be done by the customer, well, bottom drainage pit 50 cm x 50 cm x 50 cm dimensions will be made.
- › Electricity supply panel will be installed in the installation area at the location specified by the manufacturer on the project.
- › Power line to the supply panel will be made with 5x4 mm TTR cable.
- › There must be a 3x16 amp fuse in the electric box there should be a circuit breaker on the supply panel.

» DIMENSIONS

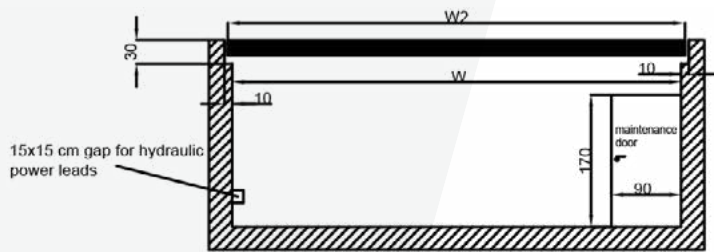
- › All dimensions minimum finished dimensions.
- › Tolerans must be taken into consideration
- › All dimension is cm.

» MONO PLATFORM



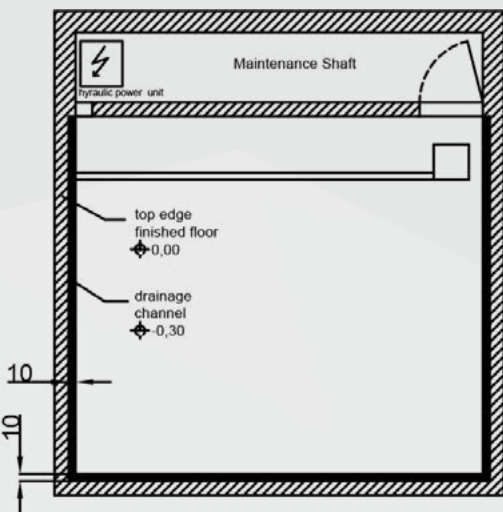
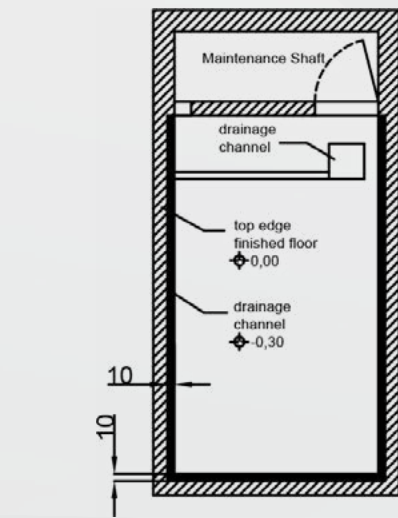
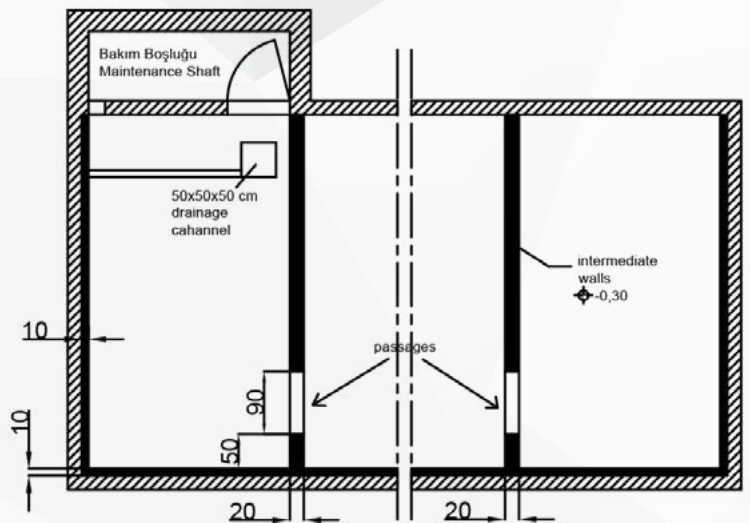
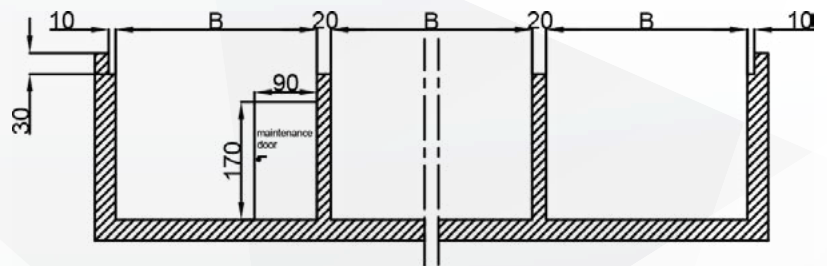
Mono Platform	Platform Width	
Pit Width (W)	Park Floor Width	Roof Platform (W2)
280 cm	230 cm	295 cm
290 cm	240 cm	305 cm
300 cm	250 cm	315 cm
310 cm	260 cm	325 cm
320 cm	270 cm	335 cm

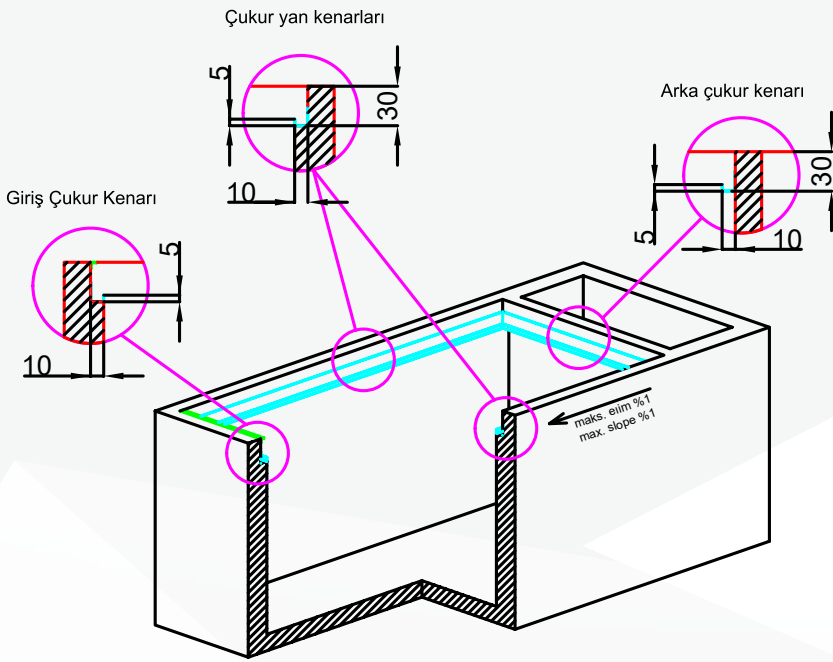
» DUO PLATFORM



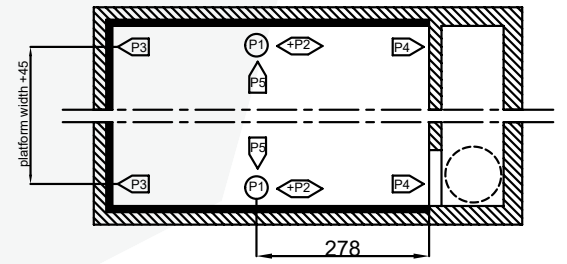
Duo Platform	Platform Geniřliđi	
Pit Width (W)	Park Floor Width	Roof Platform (W2)
510 cm	460 cm	525 cm
530 cm	480 cm	545 cm
550 cm	500 cm	565 cm
570 cm	520 cm	585 cm
590 cm	540 cm	605 cm

» MONO - DUO PLATFORM MULTI ROW

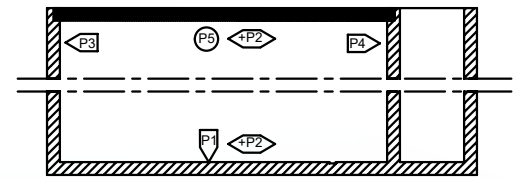




» TOPVIEW



» SIDE VIEW



» FIXING OF THE SYSTEM FRAMES TO THE FLOOR PLATE :

- › Using adhesive anchor bolts hole depth to 12-15 cm
- › anchor bolt diameter: 2 cm

» CONCRETE QUALITY GRADE :

- › compliant to the static requirements of the construction min.C25 / 30 grade
- › The p2 load only applies if the pillars are fastened on the side walls
- › coating pavement load max.100kg / m²

Static load factor sub lift mono platform car max.weight :2000 kg		
H1W1 (1 car)	H2W1 (2 cars)	H3W1(3 cars)
P1= + 80 KN	P1= + 108 KN	P1= +115 KN
P2= ± 12 KN	P2= ± 10 KN	P2= ± 9 KN
P3= + 13 KN	P3= + 9 KN	P3= + 9 KN
P4= + 12 KN	P4= + 10 KN	P4= + 8 KN
P5= + 10 KN	P5= + 11 KN	P5=+ 13 KN

Static load factor sub lift du platform car max.weight :2000 kg		
H1W2 (2 cars)	H2W2 (3 cars)	H3W2(6 cars)
P1= + 135 KN	P1= + 174 KN	P1= +186 KN
P2= ± 17 KN	P2= ± 12 KN	P2= ± 14 KN
P3= + 17 KN	P3= + 13 KN	P3= + 14 KN
P4= + 16 KN	P4= + 13 KN	P4= + 12 KN
P5= + 11 KN	P5= + 12 KN	P5=+ 13 KN



IMPORTANT NOTES

» ADEQUATE PROTECTION AGAINST SOUND TRANSMISSION SHOULD BE PROVIDED BY HOUSEHOLD APPLIANCES.

- › Adequate protection against sound transmission should be provided by household appliances.
- › Since the products have free-standing structure, protection against structure-borne noise is not required.

» DRAINAGE

Before mounting:

- › The customer must provide a concrete draining channel at the pit edge with a connection with the sewerage.

Discharge of the larger volumes of water properly:

- › The customer must provide rotating gutters outside of the pit.

» DRAINAGE CHANNEL IN PIT AREA:

- › The customer must provide a connection to floor intake or sump. (50 x 50 x 50 cm)
- › The customer must provide a sump covered with grating
- › The customer must provide a pump or drain to the sewerage system.

Sideways slope drainage:

- › Only into drainage channel, not possible in the remaining pit section.

Lengthways slope drainage:

- › Provided according to specific construction dimensions

Environmental Safety:

- › Coating of the pit floor is recommended
- › Oil and / or petrol separator unit between the sewerage and drainage is recommended.

» OPERATING DEVICE

- › Operation device position is dependent on the project.
- › An empty pipe must be prepared by the customer for the cables from the well to the control point

» TEMPERATURE

- › The system operates between -20 C and +40 C. The platform lowering velocity decreases if the temperature is lower than +5 C.
- › Please contact with SANPARK in case of any change in the surrounding's conditions.
- › Allowable humidity is 50% if temperature is higher than 40 C

» LIGHTING

- › Lighting devices must be provided by the customer
- › The minimum allowable brightness in the pit and in the maintenance shaft is 80 lux

» VENTILATION

- › Designing a ventilation system is recommended in order to reduce humidity, remove the moisture, provide air and heat exchange, and to prevent phase changes due to temperature.

» FIRE SAFETY

- › The customer must provide all the fire safety equipments (fire extinguisher, fire alarm systems, etc.).

» PROTECTION

- › The customer must provide the protection for the construction area during the construction phase.

» HYDRAULIC POWER PACK

- › The hydraulic power pack will be placed in the maintenance shaft.

» MAINTENANCE SHAFT

- › The customer must provide separate maintenance shafts with access to the pit.
- › Common maintenance shaft for a row is feasible, depending on the project.
- › The customer must provide the shaft ladder and the manhole.

» MOUNTING

- › The customer must provide a crane for mounting.
- › The customer must provide a mobile crane with a minimum radius of 5m for rooftops or underground garages.